

The Insurance Institute of  
**London**



IN ASSOCIATION WITH

**HOUSE OF FRASER**  
SINCE 1849

IN AID OF

*maggie's*  
People with cancer  
need places like these



The Pavilion at the Tower of London • Tuesday 18 June 2013

THE GLAMOROUS PROFESSIONAL NETWORKING EVENT IN THE CITY



# WELCOME

It is my pleasure to welcome so many of our members and supporters here to the Insurance Institute of London's first ever **Square Mile Style charity fashion show** at the Pavilion at the Tower of London – what an event; what a venue!

This promises to be an afternoon of networking, fundraising and fun and has been organised specifically to attract members who may be unable to attend our usual programme of networking and social events.

This event could not have been possible without the time and dedication of the Institute's Young Members Committee, particularly Karin Garfjeld Roberts and Sydonie Williams, who came to us over a year ago with the idea for the event – I am sure you will all agree that they have done a superb job! I would also like to pass our thanks on to our fantastic industry models whose details can be found on page five.

It is a great privilege to be able to hold this event at this unique location in aid of Maggie's, and I am particularly delighted to welcome and thank today's host and one of Maggie's top supporters, comedian and actress Arabella Weir, who has kindly donated her time to join us.

Finally, a huge thank you to our sponsors, without whom this event could not take place: Catlin Group Limited (Gold Sponsor), ACE European Group, Brit Global Specialty, Canopus, Gen Re, Ince & Co LLP, RGL Forensics, Talbot Underwriting (Silver Sponsors) and Allianz Insurance, Amlin and RSA Insurance Group (Bronze Sponsors).

There are many others we need to thank for their support so please read our acknowledgements on page 31. I do hope that you enjoy this afternoon's event – please do not hesitate to dig deep and help us to raise a significant amount of money for the excellent work of Maggie's.

**Barnabas Hurst-Bannister ACII**  
President, Insurance Institute of London



# RUNNING ORDER



**12:00 - 12:45** Guest arrival & sparkling wine reception



**12:45 - 13:00** Guests to be seated



**13:00 onwards**



**Welcome** Barnabas Hurst-Bannister ACII, President,  
Insurance Institute of London



**Host** Arabella Weir, Actress, Author & Comedian



**Industry model catwalk show**



**Charity address** Laura Lee, Chief Executive, Maggie's



**Auction & prize draw** Hugh Edmeades, International Director,  
Auctioneering, Christie's



**Professional model catwalk show**



**Performance** Julia Johnson, Singer, Songwriter & Supporter  
of Maggie's



**15:50** Thank you & close



# SPONSORS

We would like to thank the following sponsors for their generous support of this event

## GOLD SPONSOR

**CATLIN**

Underwriting Ambition

Catlin Group Limited is pleased to support the Square Mile Style charity fashion show in aid of Maggie's Centres. We wish everyone a pleasant time.



## SILVER SPONSORS



## BRONZE SPONSORS



# INDUSTRY MODELS



**Inga Beale ACII**

Group CEO,  
Canopus



**Vicky Carter**

Vice Chairman of  
International Operations,  
Guy Carpenter



**Lorraine Denny**

Group Human  
Resources Director,  
Brit Insurance



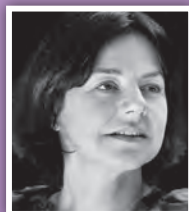
**Chris Moore**

Liability Underwriter,  
Apollo Syndicate 1969  
& Lloyd's Rugby Club



**Robert Pound**

Miller Insurance LLP  
& Lloyd's Rugby Club



**Kate Vacher ACII**

Director of Underwriting,  
Aspen

and **Nathan Taylor**, Broker, Willis Re



All items worn by our industry and professional models today have been kindly provided by House of Fraser City and can be found in store, or ordered online at

[www.houseoffraser.co.uk](http://www.houseoffraser.co.uk)

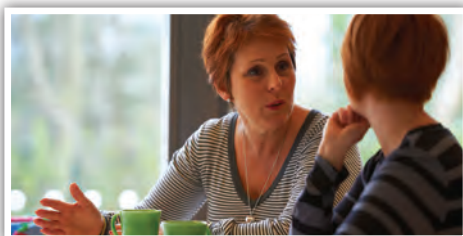


# OUR CHOSEN CHARITY

Warm, welcoming and full of light and open space, Maggie's Centres offer the practical, emotional and social support that people with cancer and their family and friends need.

Designed by leading architects and situated in the grounds of NHS cancer hospitals, Maggie's Centres provide a unique approach to cancer care that, at its simplest, can be described as 'calmness, clarity and a cup of tea'.

Calmness comes from the relaxing atmosphere inside our Centres, which provide a refuge from the stress of dealing with hospitals and endless waiting rooms. Clarity comes from the professional experts who work at Maggie's, who'll listen to your concerns and provide practical information. And a cup of tea, because Maggie's is a place where you can feel at home, put the kettle on and simply sit at a kitchen table with people who understand what you're going through.



[www.maggiescentres.org](http://www.maggiescentres.org)

*maggie's*  
People with cancer  
need places like these



*maggie's*  
**Culture  
Crawl  
2013**



## Be a walk of art

**Friday 20 September 2013**

Venture out for a night of discovery, culture, architecture and surprise while raising money for Maggie's Cancer Centres on Maggie's first ever Culture Crawl.

Join us and help people with cancer - places are limited so sign up today.

[www.maggiescentres.org/culturecrawl](http://www.maggiescentres.org/culturecrawl)

Sponsored by

**DELANCEY**

In partnership with

Open  
—City

**Open House  
London  
2013**

*maggie's*



# AUCTION PRIZES

## Unique "Spoils of War" framed photograph featuring and signed by the 2010/2011 England Cricket Team and a signed cricket bat and shirt

The 'Spoils of War' was commissioned to celebrate the England Team's great success in the 12 months leading up to summer 2011 - only nine prints of which were ever produced.

A fantastic memento for any England cricket fan, this photo was taken by award winning photographer Tom Shaw, Getty Images, in the prestigious Long Room at the Oval cricket ground.

If you look closely in the background you can see the ICC Test Championship mace trophy which England won for being the best test team in the World, the ICC World Twenty20 trophy and, last but by no means least, the famous Ashes Urn.

The lucky winner will also receive a signed shirt from the England v South Africa ODI Series 2012 and a signed cricket bat from the England v South Africa Test Series 2012.



**KINDLY DONATED BY BRIT GLOBAL SPECIALTY**



## A private corporate box at Ascot for their "Festival of Food & Wine Race Day"

Ascot's Festival of Food and Wine Race Day combines great racing with fantastic food. Race-goers can shop between races, purchasing locally-produced items from country suppliers, and wine connoisseurs will also be on hand to give guests expert advice on selecting wines to suit their palates.

However let us not forget that the racing is equally as impressive, with high-profile races featured throughout the day including the Ladbrokes Mobile Handicap - Britain's most valuable three-year-old handicap with prize money of £150,000.

This prize entitles the winner and up to 13 guests to private access to an exclusive corporate box for the duration of the race day, and food and beverages will be provided.

*For up to 14 people. To take place on **Saturday 7 September 2013**. Food and drink up to a value of £100 per head will be provided. Any additional costs must be settled by the winner on the day.*

**KINDLY DONATED BY AMLIN**



## Personal shopping experience at House of Fraser Oxford Street, House of Fraser vouchers and dinner for two at HIX Mayfair

Enjoy the stylish indulgence of personal shopping at House of Fraser's flagship Oxford Street store. Your highly-skilled personal shopper will make shopping a truly effortless and luxurious experience, attending to your every need and helping you select from one of the widest ranges of designer brands under one roof.

Want a new look or need help putting together an outfit for that special occasion or event? Do you need a new work wardrobe, or advice on how to wear the season's latest trends? No matter what your fashion dilemma, your personal shopper will go that extra mile to get it for you so that you don't have to!

Finish off the day in equal style with dinner for two at the glamorous HIX Mayfair where Executive Chef Lee Streeton and Director of Food Mark Hix have created an outstanding dining experience celebrating British cuisine and art. The menu features only the finest locally sourced seasonal ingredients and the restaurant is home to an amazing collection of work by leading British artists, including a neon by Tracey Emin and photography by Rankin.

To be taken before **30 December 2013**. Subject to availability.

**KINDLY DONATED BY HOUSE OF FRASER AND ROCCO FORTE'S BROWN'S HOTEL**



## A day aboard a luxury yacht for 10 people

There are few companies in the country with Lymington Yacht Charters's long experience in skippered chartering. This is your opportunity to secure one day aboard Sun Odyssey 45 - one of the most elegant Jeanneau's in LYC's fleet of 30 luxurious yachts, with a wide and comfortable cockpit and eight berths below decks.

Whether you're looking for a true sailing challenge or a relaxed cruise around the Solent, Sun Odyssey's Lymington location means there's no shortage of great sailing routes and interesting destinations.

Over recent years, sailing has become a major sporting and social occasion - an ideal environment for motivating and communicating with colleagues, a unique way to spend quality time with your guests...or a great day out with family and friends! The sense of camaraderie and team spirit that you gain from sailing lasts a great deal longer than the day itself and most importantly of all, forms an ideal foundation on which future relationships and partnerships can be firmly built upon.

*Subject to availability. Catering costs and the cost of the skipper are not included. Skipper to be paid on the day at £135 plus VAT and any catering required to be organised with LYC in advance. For a maximum of 10 people.*

**KINDLY DONATED BY LYMINGTON YACHT CHARTERS**

## A night at English National Opera

This autumn you and four guests can enjoy an English National Opera production of your choice at the London Coliseum from the comfort of a box. Five productions feature in ENO's exciting autumn season: Beethoven's *Fidelio*, Strauss's classic operetta *Die Fledermaus*, a revival of Anthony Minghella's beautiful production of *Madam Butterfly*, Mozart's *The Magic Flute* in a new staging by Simon McBurney and *Satyagraha* by Philip Glass.

*Dates are subject to mutual agreement. The prize is valid for a performance between **25 September 2013 and 8 December 2013**. Please note, children under five are not permitted into the auditorium.*



**KINDLY DONATED BY ENGLISH NATIONAL OPERA**

## Four tickets for the Aviva Premiership London Double Header and a signed Wasps shirt

Watch Saracens, London Irish, London Wasps and Harlequins at the home of English rugby, Twickenham, competing in the first weekend of fixtures of the 2013/2014 Aviva Premiership season.

Last September's London Double Header saw some of the most thrilling action of the opening weeks so who knows what will be in store this time around! 2013 will see the tenth London Double Header and a whole host of other activity on the day, including the Aviva Premiership Village from midday with bars, food and interactive games keeping you entertained prior to kick off.



As if this wasn't enough, this is also your chance to secure a 2012/2013 Wasps shirt, signed by 26 players from the squad, including internationally capped players Joe Simpson (England) and Marco Wentzel (South Africa).

*Tickets are for the Aviva Premiership Rugby Double Header on **Saturday 7 September 2013** and are strictly non transferrable.*

**KINDLY DONATED BY AVIVA**

## Beautifully crafted Mappin and Webb sterling silver knot design pendant with matching earrings

Since 1774 the Mappin and Webb name has been identified with the finest sterling silver and they are represented on countless family heirlooms and objects of beauty throughout the world. As proud Royal Warrant holder to Her Majesty The Queen and His Royal Highness The Princes of Wales, Mappin and Webb has become synonymous with the personal service and the devotion to all things luxurious. We are pleased to offer these beautifully crafted sterling silver knot design pendant with matching earrings.



**KINDLY DONATED BY MAPPIN AND WEBB**



# Catlin is proud to sponsor the Square Mile Style charity fashion show

Catlin Group Limited is an international specialty property/casualty insurer and reinsurer. We operate worldwide through six underwriting hubs.

In the UK, Catlin operates the largest syndicate at Lloyd's of London and also underwrites insurance for commercial clients through Catlin UK.

---

CATLIN

---

Underwriting Ambition

# PRIZE DRAW

**Paul Smith handbag**

*Kindly donated by Paul Smith*

**One-off Pink Ribbon coat stand**

*Kindly designed and donated by Voon Wong & Benson Saw for Maggie's*

**Four ball with two buggies at Mannings Heath Golf Club  
on their exclusive Waterfall Course**

*Kindly donated by Mannings Heath Golf Club*

**Lucky Voice Party Box karaoke machine**

*Kindly donated by Lucky Voice*

**A selection of wine**

*Kindly donated by Create Food & Party Design*

**Quad biking safari experience for two people at Ashtree Farm, Kent**

*Kindly donated by The Wright Event*

**Two beauty hampers (one cosmetic, one skincare)**

*Kindly donated by House of Fraser City*

**Thirty minute fitness assessment and one hour personal  
training session at Matt Roberts City Club**

*Kindly donated by Matt Roberts*

**Wash, cut and blow dry with a Toni & Guy Salon Manager**

*Kindly donated by Toni & Guy Fenchurch Street*

**Maggie's running vest signed by Paul Smith and  
Paul Smith mug designed for Maggie's**

*Kindly donated by Paul Smith*

**Meal for two at The Factory House**

*Kindly donated by The Factory House*

**Blow dry voucher for Hersheson's Blow Dry Bar**

*Kindly donated by Hersheson's Blow Dry Bar*

# GUEST LIST BY SURNAME

Surname, First Name - Job Title - Company

Table No.

Aalit, Cheryl - Team Secretary - Insurance Institute of London	20
Ager, Sara - Claims & Clients Services Director - Gallagher Bassett	30
Akwivu, Emeka - UK & Ireland Property Facultative Manager - Gen Re	17
Alder, Caroline - Senior Underwriter - Chubb	11
Allyn, Dene - Vice President - Lockton Insurance Brokers	12
Ash, Kate - Associate Director - Bell & Clements	12
Atkinson, Jonny - Aspen	19
Badcock, Valerie - Executive Director - Willis Re	27
Banks, Holley - Client Manager - Aon	12
Bare, Charity - Head of Risk Management - Talbot Underwriting Ltd	18
Barley, Victor - Director - Mappin & Webb	28
Barrett, Joanne - Angel	4
Bartolo, Emma - UK&I Environmental Risk Manager - ACE	24
Bascombe, Sarah - Senior Claims Adjuster - If P&C Insurance plc	26
Baxter, Charity - Property Treaty Underwriter - Swiss Re	27
Beale, Inga - CEO - Canopus	10
Beckwith, Ed	19
Bell, Rebecca - Broker - Iris Insurance Brokers	21
Bowers, Claire - Broker - Haywards	9
Bradley, Karen - Miles Smith	4
Brown, Lynette - Underwriter - Amlin	3
Buckley, Diane - Managing Director, GI - Legal & General Insurance	27
Budge, Alice - Broker, Professional Risks - Cooper Gay & Co Ltd	25
Buege, Rhonda - European Underwriting Manager Health Pro - CNA	11
Bukaty, Paulina - Guy Carpenter	16
Burke Westinghouse, Brenna - Senior Vice President, FINPRO UK - Marsh	25
Burrows, Laurence - Underwriter - Aspen	11
Campe, Kirsty - Underwriter - Hiscox	31
Carroll, Louise - Associate - Berrymans Lace Mawer	28
Carter, Vicky - Vice Chairman of International Operations - Guy Carpenter	22
Carville, Elizabeth - Manager - Mappin & Webb	28
Catchpole, Sophie - Intern - QBE	2
Chandler, Pat - Senior Property Underwriter/VP - Gen Re	17
Chapman, Lisa - Senior Risxfacs Consultant - Gallagher Bassett	30
Chappell, Jo - Head of Risk & Compliance - RenaissanceRe Syndicate	29
Chenu, Veronique - Head of Litigation - Riverstone	26
Chiotis, Christos - Claims Adjuster - Amlin	3
Clark, Sue - Underwriter - Kiln Life Syndicate	21
Clarke, Cathryn - Gallagher Bassett	30
Clautour, Karen - Claims & Clients Services Manager - Gallagher Bassett	30
Cloutier, Mark - Group Chief Executive Officer - Brit Insurance	25

# GUEST LIST BY SURNAME

Surname, First Name - Job Title - Company	Table No.
Clouting, Jane - Head of Governance - Talbot Underwriting Ltd	18
Colburn, Annie - Broker - Aon	31
Corbella, Martina - Placement Broker - Marsh	24
Coryn, Sally - Head of Business Development & Communications - Canopus	10
Cottrell, Rebecca - Amlin	16
Coward, Ana Cristina - Underwriter, Energy - Allianz Global Corporate & Specialty	6
Culcas Martin, Vanessa - Adensa	29
de Lang, Judith - Senior Claims Adjuster - Travelers	26
Deans, Sarah - Senior Technical Underwriter - Zurich	17
Deanus, Daisy - Senior D&O Underwriter - ACE	24
De'ath, Victoria - Lloyd's	19
Denny, Lorraine - Group Human Resources Director - Brit Insurance	25
Dhunjar, Satinder - Marketing Manager - Sequel Business Solutions	8
Dixon, Catherine - Property & Risk Control Manager - Allianz	17
Do, Long - Underwriting Assistant - Amlin	3
Doran, Amanda - Underwriting Manager, Commercial Combined - QBE	17
Dunford, Lucy - Senior Property Underwriter - Allianz Global Corporate & Specialty	9
Durniat, Kim - Partner - Barnett Waddingham	21
East, Katie - Property Underwriter - Gen Re	17
Edwards, Ann - Aon	4
Edwards, Rachel - Amlin	16
Falk, Tara - Chief Executive Officer - Paragon International Insurance Brokers Ltd	25
Faoussi, Soraya - Assistant Vice President - Guy Carpenter	6
Fera, Nicole - Client Manager, Globals - Swiss Re	27
Fernandes, Lorraine - Solicitor - Ince & Co LLP	26
Flexen, Gaye - Lloyd's	29
Fox, Kim - Chief Operating Officer - RenaissanceRe Syndicate	29
Frankovic, Lara - Senior Underwriter Specialist - Gen Re	11
French, Catherine - Placing Broker - Marsh	24
French, Sian - Marsh	4
Fumero, Judith - Liability Claims Manager - Argo International	26
Garfjeld Roberts, Karin - Underwriter - Gen Re	11
Garner, Cathy - Active Underwriter - Kiln Life Syndicate	21
Garrow, Caroline - Underwriting Services Manager - Gallagher Bassett	30
Gibbs, Kelly - IT Systems Analyst - Gallagher Bassett	30
Green, Rebecca - Willis	6
Greenacre, Nicci - Digital Media Manager - Insurance Institute of London	20
Guests of Xchanging	8
Guests of Allianz	6
Guests of Allianz	9
Guests of Aspen	19



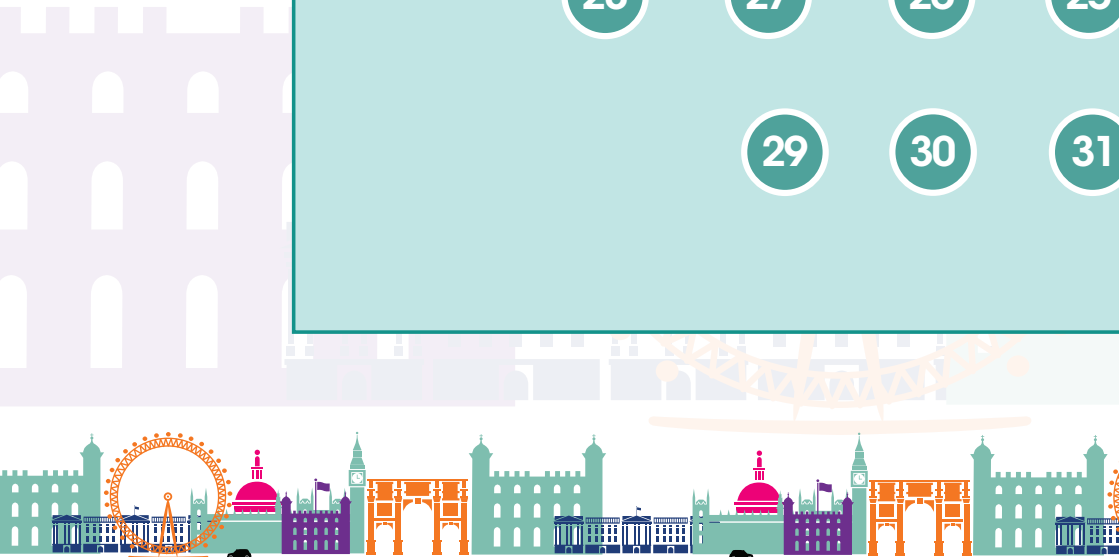
We are  insured.

Insurance for businesses, families and individuals | [acegroup.com/eu](http://acegroup.com/eu)

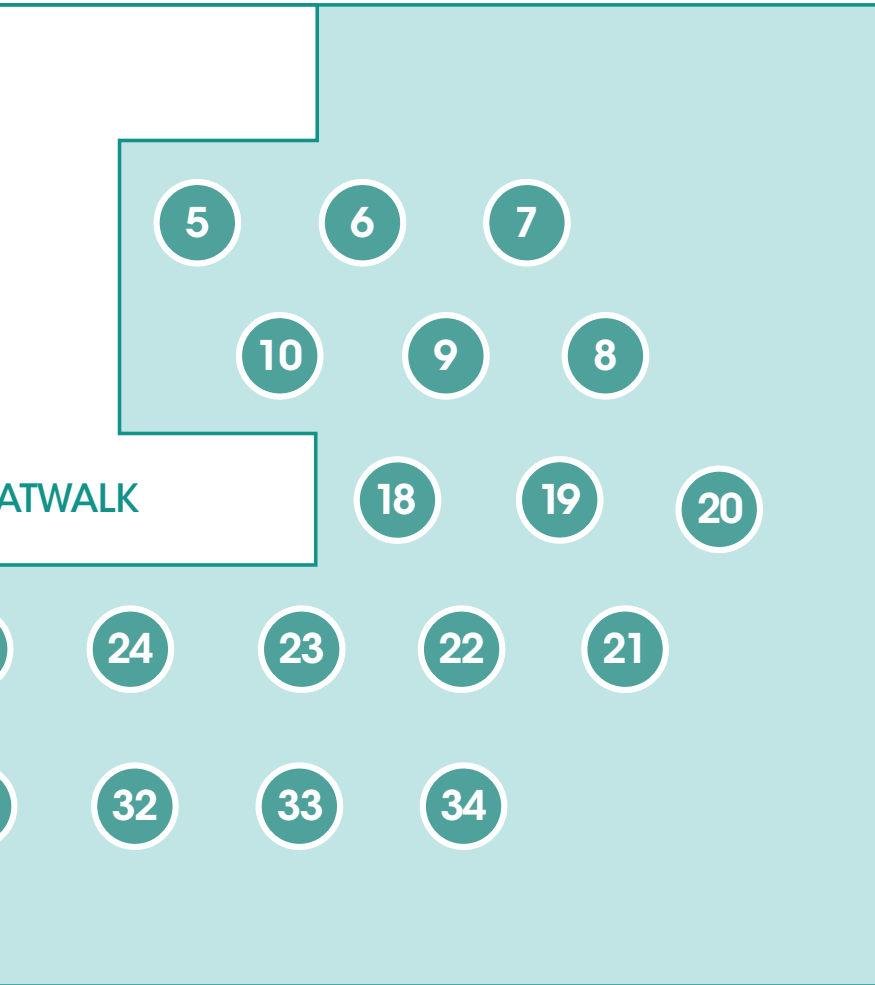
*What does it mean to be ACE insured?*

*I work with local experts who truly understand my risks and go the extra mile. I count on the people at ACE for everything from loss prevention advice to paying my claims. I can get on with growing my business, knowing I'm protected by one of the largest and strongest insurers in the world.*

# TABLE PLAN







ATWALK

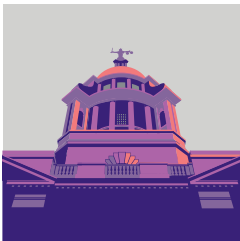


# GUEST LIST BY SURNAME

Surname, First Name - Job Title - Company	Table No.
Guests of Chubb	33
Guests of Chubb	34
Guest of Gen Re	11
Guests of Guy Carpenter	22
Guest of IDEX Consulting	8
Guests of Marsh	32
Guests of Talbot Underwriting Ltd	18
Guests of THB Group	7
Guests of The Brokerage Citylink	2
Guests of The Brokerage Citylink	13
Guests of the Graduate Insurance Network	1
Hale, Jen - Underwriter, Aviation - Allianz Global Corporate & Specialty	9
Halley, Sheila - Senior Account Executive - Howard Global	21
Hanneman, Michaela - Account Executive/Senior Underwriter - Gen Re	11
Hanzi, Louise - PA - Canopus	10
Harding, Dawn - Director - Bell & Clements	12
Harding, Tracey - London Multi-lines Manager - Liberty	17
Hardy, Frederique - Director - RGL Forensics	23
Harrison, Charlotte - Client Services Manager - Gallagher Bassett	30
Hatcher, Cheryl - Group Learning & Development Manager - Towergate Insurance	7
Heath, Oyin - Senior Vice President - Marsh	31
Hellmayr, Ines - Treaty Chief Underwriter UK - Gen Re	11
Henderson, Gemma - Partner - IDEX Consulting	8
Hennessey, Sophie - Underwriter - Amlin London	12
Higgins, Maureen - Reinsurance Support - RenaissanceRe Syndicate	29
Higgon, Katie - Aon Benfield	16
Hodgson, Jenny - Director - RGL Forensics	23
Holloway, Amy - Senior Property Underwriter - Gen Re	17
Houlihan, Marie - Corporate Financial Controller - Talbot Underwriting Ltd	18
Hunt, Mary - Broker - Willis	31
Hunter, Hayley - Broker - Miller	21
Hurst, Fiona - BMS	16
Hurst-Bannister, Barnabas - President - Insurance Institute of London	5
Hussain, Safian - Underwriting Technician - Canopus	10
Jackson, Martin - Aspen	19
James, Mariko - Willis	16
James, Perry Francis - Intern - QBE	2
Jeewood, Aaron - Corporate Sales - Mappin & Webb	28
Jenkins, Matthew - Assistant Underwriter, North American Professional Liability - Brit Insurance	25
Jenkins, Victoria - Co-Head of Analytics EMEA - Guy Carpenter	27

# BRIT

GLOBAL SPECIALTY



## BRIT IS A MARKET LEADER IN GLOBAL SPECIALTY INSURANCE AND REINSURANCE

We underwrite across all major classes of commercial insurance with a strong focus on Property, Casualty and Energy Business.

Brit is a reputable name in the Lloyd's Market and we pride ourselves on our specialist underwriting and claims experience.

SEEING THE DIFFERENCE **MAKES THE DIFFERENCE**

# GUEST LIST BY SURNAME

Surname, First Name - Job Title - Company	Table No.
Jenkinson, Livi - Marketing Executive - Pulse	21
Jennings, Stephanie - Integro	9
Kelly, Sarah-Ann - Underwriting Assistant - Amlin London	12
Kennedy, Victoria - Associate - Berrymans Lace Mawer	28
Khawani, Anjli - Business Improvement Projects Manager - Gallagher Bassett	30
Kinlan, Donna - P&C Client Manager - Swiss Re	27
Kinnear, Claire - Assistant Operations Manager - RenaissanceRe Syndicate	29
Knapman, Kevin - Casualty Manager - Gen Re	11
Kumar, Neera - VP, Energy - Marsh Ltd	6
Lambert, Emily - Liberty	16
Lawrence, Danika - The Brokerage Citylink	2
Layden, Zoe - Senior Broker Relationship/Key Account Manager - Allianz Global Corporate & Specialty	6
Layton, Corinne - Lloyd's	29
Le Carpentier, Paula - Senior Property Underwriter - Mitsui	17
Lee, Laura - Chief Executive - Maggie's	5
Lee, Winsome - AIG	18
Leonard, Lisa - Thomson Reuters	29
Leow, Sue Yen - Head of Financial Institutions - Allianz Global Corporate & Specialty	9
Lepparde, Amber - Willis	24
Loffhouse, Claire - Catlin	4
Lucien, Melissa - The Brokerage Citylink	2
Macfarlane, Nicholas - Assistant Underwriter - Amlin	3
Maddison, Lindsey - Events Manager - Insurance Institute of London	20
Man, Angela - Miles Smith	4
Mann, Ramona - Underwriter - Amlin London	12
Marsh, Jonathan - Willis Re	19
McCabe, Connie - Divisional Manager - Gallagher Bassett	30
McGrath, Kyle - Broker - JLT	31
Milton, Lara - Client Director - Aon	31
Moffett, Carla - Executive Director - Lockton Re	27
Moore, Chris - Liability Underwriter - Apollo Syndicate 1969	5
Moraes, Sanchia - Learning & Development Manager - Miller	7
Morgan, Tangy	18
Mould, Chloe - Events Coordinator - Maggie's	20
Mowat, Felicity - Solicitor - Kennedys	23
Mudd, Jonathan - Class Underwriter, North American Professional Liability - Brit Insurance	25
Murray, James - Underwriting Assistant - Amlin	3
Nathan, Nina - HR Manager - Canopi.us	10
Nilsson, Gisela - Underwriter - Hiscox	31

# CANOPIUS

[www.canopus.com](http://www.canopus.com)

Catwalk presence



Canopus is proud to sponsor the Square Mile Style charity fashion show in aid of Maggie's centres.



CANOPIUS

local  
underwriter-to-underwriter **direct** expertise  
**direct** solutions technical knowledge **competitive**  
**collaborative** local underwriter-to-underwriter  
expertise **competitive** technical knowledge **direct** global  
claims professional to claims professional solutions **open** expertise  
underwriter-to-underwriter **collaborative** technical knowledge  
technical knowledge **open** expertise local **transparent**  
**direct** global underwriter-to-underwriter **open**  
**competitive** claims professional to claims professional

local

**Be direct.**

Talk to a decision making underwriter.

Why risk being misunderstood? As a direct reinsurer, we underwrite and evaluate each risk alongside our clients. This regular exchange of expertise and technical knowledge leads to better underwriting decisions for both of us— with no room for misunderstanding.

**Simplify your reinsurance. Talk to a Gen Re underwriter today.**

***Gen Re Facultative—Your Strongest Asset.***



*A Berkshire Hathaway Company*

S&P: AA+ | A.M. Best: A++

Moody's: Aa1 | Fitch: AA+

# GUEST LIST BY SURNAME

Surname, First Name - Job Title - Company

Table No.

Nwosu, Silvia - Intern - QBE	2
O'Brien, Siobhan - Marsh UK	9
Oliver, Julie - PA - Canopus	10
Painter, Debbie - Real Estate Leader - RSA	17
Parfitt, Coral - Global Insurance Consultant - Bellwood Prestbury	21
Parfitt, Tish - Underwriter, Liability - Allianz Global Corporate & Specialty	9
Payne, Clare - Placing Broker - Gallagher Heath	24
Payne, Nicola - Executive Director, Senior Broker - Aon Benfield	27
Peberdy, Rima - Claims Team Leader - Gallagher Bassett	30
Penfold, Jane - Senior Adjuster - AIG	23
Penrose-Stevens, Joti - Partner - Kennedys	23
Perkins, Judith - Solicitor - Elborne Mitchell	8
Pike, Tabitha - Underwriting Assistant - Hiscox	31
Potts, Allison - Institute Secretary - Insurance Institute of London	5
Pound, Robert - Miller Insurance LLP	5
Proctor, Katherine - Senior Associate - Ince & Co LLP	26
Quarrier, Carey - Special Events Manager - Maggie's	20
Rawlin, Catherine - Partner - RGL Forensics	23
Readings, Richard - Strategic Analyst - Canopus	10
Rees, Charlotte - Senior HR Officer - RenaissanceRe Syndicate	29
Rees, David - Underwriting Assistant - Amlin	3
Rehman, Saba - Catlin	4
Rich, Helen - Senior Technical Claims Controller - RSA	23
Ritchie, Alasdair - BMS	19
Rosam, Larissa - Trainee Client Manager/Broker - Aon	12
Russell, Gemma - Amlin	16
Schneider-Marsh, Vanessa - Marsh	4
Scott, Jane - Claims - RSA	23
Searle, Carol - Partner - Ince & Co LLP	26
Shah, Sunil - Sales Consultant - Mappin & Webb	28
Sharma, Nilam - Partner - Ince & Co LLP	26
Sharpe, Charlotte - Financial Institutions Underwriter - Talbot Underwriting Ltd	18
Shawe, David - Planning Accountant - Canopus	10
Skingle, Bradley - Claims Technician - Amlin	3
Smith, Lucy - Broker Relations Analyst - Amlin	3
Smith, Sarah - Property Underwriter - ACE	24
Snell, Louise - Casualty Underwriter - ACE	24
Stacey, Nicola - Director Property & Specialty - Swiss Re	27
Stanford, Sarah - Aspen	19
Stefurak, Olga - Amlin	16
Stevenson, Georgie - Business Development & Communications Assistant - Canopus	10

# GUEST LIST BY SURNAME

Surname, First Name - Job Title - Company	Table No.
Stuermer, Marina - Vice President, Willis North America London - Willis Group	9
Sweis, Lama - Senior Vice President - Lockton (MENA) Limited	6
Taylor, Nathan - Broker - Willis Re	5
Thomas, Marian - Assistant Underwriter - Amlin London	12
Thomas, Marie - Senior Vice President - Marsh	31
Thoms, Tina - Lecture Programme Manager - Insurance Institute of London	20
Thorning, Naomi - Ark	16
Townsend, Amie - Operations Technician - Hiscox	31
Ulusoy, Zara - Broker - Willis	21
Vacher, Kate - Director of Underwriting - Aspen	19
Wager, Sue - Aon	4
Walker, Edward - Finance & Administration Manager - Insurance Institute of London	20
Watkins, Guillaume - Underwriting Assistant - Amlin	3
Webber, Sharon - Global Placement Leader - RSA	27
Weigel Munoz, Mariana - Broker - Miller	21
Weir, Arabella	5
Wheeler, Georgie - Assistant Underwriter - Amlin	3
Wicks, Katie - Actuary	29
Williams, Lisa - Corporate Development Manager - CII	7
Williams, Louise - Angel	4
Wilson, Matthew - Chief Executive Officer - Brit Insurance	25
Wood, Nic - Senior Underwriter - Aspen	11
Wyatt, Kerrie - Underwriting Assistant - Amlin London	12





**We are delighted to sponsor the  
Square Mile Style charity fashion show.**

**We have over 140 years of experience in providing legal services and, like fashion, we change with the seasons and keep on top of the trends. We are vintage yet versatile, chic yet fresh. Our tailoring ensures that we are the very best fit, providing services that meet your specific needs and solutions that are innovative.**

Alternative Risk Transfer | Aviation and space  
Bloodstock, livestock and aquaculture | Captives  
Corporate insurance | Contingency | Energy  
Financial lines | Liability | Marine | Reinsurance  
Political and credit risk | Professional negligence  
Property and business interruption

[incelaw.com](http://incelaw.com)

Beijing   Dubai   Hamburg   Hong Kong   Le Havre   London   Monaco   Paris  
Piraeus   Shanghai   Singapore

# GUEST LIST BY TABLE

## Table 1 - The Graduate Insurance Network

Guests of the Graduate Insurance Network

## Table 2 - The Brokerage Citylink

Catchpole, Sophie  
James, Perry Francis  
Lawrence, Danika  
Lucien, Melissa  
Nwosu, Silvia  
Guests of The Brokerage Citylink

## Table 3 - Amlin

Brown, Lynette  
Chiotis, Christos  
Do, Long  
Macfarlane, Nicholas  
Murray, James  
Rees, David  
Skingle, Bradley  
Smith, Lucy  
Watkins, Guillaume  
Wheeler, Georgie

## Table 4 - Catlin Group Ltd

Barrett, Joanne  
Bradley, Karen  
Edwards, Ann  
French, Sian  
Loffhouse, Claire  
Man, Angela  
Rehman, Saba  
Schneider-Marsh, Vanessa  
Wager, Sue  
Williams, Louise

## Table 5

Hurst-Bannister, Barnabas  
Lee, Laura  
Moore, Chris  
Potts, Allison  
Pound, Robert  
Taylor, Nathan  
Weir, Arabella

## Table 6 - Allianz

Coward, Ana Cristina  
Faoussi, Soraya  
Green, Rebecca  
Kumar, Neera  
Layden, Zoe  
Sweis, Lama  
Guests of Allianz

## Table 7

Hatcher, Cheryl  
Moraes, Sanchia  
Williams, Lisa  
Guests of THB Group

## Table 8

Dhunjar, Satinder  
Henderson, Gemma  
Perkins, Judith  
Guest of IDEX Consulting  
Guests of Xchanging

## Table 9 - Allianz

Bowers, Claire  
Dunford, Lucy  
Hale, Jen  
Jennings, Stephanie  
Leow, Sue Yen  
O'Brien, Siobhan  
Parfitt, Tish  
Stuermer, Marina  
Guests of Allianz

## Table 10 - Canopiis

Beale, Inga  
Coryn, Sally  
Hanzi, Louise  
Hussain, Safian  
Nathan, Nina  
Oliver, Julie  
Readings, Richard  
Shawe, David  
Stevenson, Georgie

## Table 11 - Gen Re

Alder, Caroline  
Buege, Rhonda  
Burrows, Laurence  
Frankovic, Lara  
Garfjeld Roberts, Karin  
Hanneman, Michaela  
Hellmayr, Ines  
Knapman, Kevin  
Wood, Nic  
Guest of Gen Re

# GUEST LIST BY TABLE

## Table 12 - Amlin

Allyn, Dene  
Ash, Kate  
Banks, Holley  
Harding, Dawn  
Hennessey, Sophie  
Kelly, Sarah-Ann  
Mann, Ramona  
Rosam, Larissa  
Thomas, Marian  
Wyatt, Kerrie

## Table 13 - The Brokerage Citylink

Guests of The Brokerage Citylink

## Table 16 - Amlin

Bukaty, Paulina  
Cottrell, Rebecca  
Edwards, Rachel  
Higgon, Katie  
Hurst, Fiona  
James, Mariko  
Lambert, Emily  
Russell, Gemma  
Stefurak, Olga  
Thorning, Naomi

## Table 17 - Gen Re

Akwiwu, Emeka  
Chandler, Pat  
Deans, Sarah  
Dixon, Catherine  
Doran, Amanda  
East, Katie  
Harding, Tracey  
Holloway, Amy  
Le Carpentier, Paula  
Painter, Debbie

## Table 18 - Talbot Underwriting Ltd

Bare, Charity  
Clouting, Jane  
Houlihan, Marie  
Lee, Winsome  
Morgan, Tangy  
Sharpe, Charlotte  
Guests of Talbot Underwriting Ltd

## Table 19 - Aspen

Atkinson, Jonny  
Beckwith, Ed  
De'ath, Victoria  
Jackson, Martin  
Marsh, Jonathan  
Ritchie, Alasdair  
Stanford, Sarah  
Vacher, Kate  
Guests of Aspen

## Table 20 - The Insurance Institute of London

Aalit, Cheryl  
Greenacre, Nicci  
Maddison, Lindsey  
Mould, Chloe  
Quarrier, Carey  
Thoms, Tina  
Walker, Edward

## Table 21 - Kiln Life Syndicate

Bell, Rebecca  
Clark, Sue  
Durniat, Kim  
Garner, Cathy  
Halley, Sheila  
Hunter, Hayley  
Jenkinson, Livi  
Parfitt, Coral  
Ulusoy, Zara  
Weigel Munoz, Mariana

## Table 22 - Guy Carpenter

Carter, Vicky  
Guests of Guy Carpenter

## Table 23 - RGL Forensics

Hardy, Frederique  
Hodgson, Jenny  
Mowat, Felicity  
Penfold, Jane  
Penrose-Stevens, Joti  
Rawlin, Catherine  
Rich, Helen  
Scott, Jane

## Table 24 - ACE European Group

Bartolo, Emma  
Corbella, Martina  
Deanus, Daisy  
French, Catherine  
Lepparde, Amber  
Payne, Clare  
Smith, Sarah  
Snell, Louise

# Proud to sponsor Square Mile Style



Photos courtesy of Tom Morris / Lloyd's of London / Andrew Dunn

**RGL** Forensics

Discovering & Defining Financial Value

[rgl.com](http://rgl.com)

# GUEST LIST BY TABLE

## Table 25 - Brit Global Specialty

Budge, Alice  
Burke Westinghouse,  
Brenna  
Cloutier, Mark  
Denny, Lorraine  
Falk, Tara  
Jenkins, Matthew  
Mudd, Jonathan  
Wilson, Matthew

## Table 26 - Ince & Co LLP

Bascombe, Sarah  
Chenu, Veronique  
de Lang, Judith  
Fernandes, Lorraine  
Fumero, Judith  
Proctor, Katherine  
Searle, Carol  
Sharma, Nilam

## Table 27 - Swiss Re

Badcock, Valerie  
Baxter, Charity  
Buckley, Diane  
Fera, Nicole  
Jenkins, Victoria  
Kinlan, Donna  
Moffett, Carla  
Payne, Nicola  
Stacey, Nicola  
Webber, Sharon

## Table 28

Barley, Victor  
Carroll, Louise  
Carville, Elizabeth  
Jeewood, Aaron  
Kennedy, Victoria  
Shah, Sunil

## Table 29 - RenaissanceRe Syndicate

Chappell, Jo  
Culcas Martin, Vanessa  
Flexen, Gaye  
Fox, Kim  
Higgins, Maureen  
Kinneer, Claire  
Layton, Corinne  
Leonard, Lisa  
Rees, Charlotte  
Wicks, Katie

## Table 30 - Gallagher Bassett

Ager, Sara  
Chapman, Lisa  
Clarke, Cathryn  
Clautour, Karen  
Garrow, Caroline  
Gibbs, Kelly  
Harrison, Charlotte  
Khawani, Anjli  
McCabe, Connie  
Peberdy, Rima

## Table 31 - Hiscox

Campe, Kirsty  
Colburn, Annie  
Heath, Oyin  
Hunt, Mary  
McGrath, Kyle  
Milton, Lara  
Nilsson, Gisela  
Pike, Tabitha  
Thomas, Marie  
Townsend, Amie

## Table 32 - Marsh

Guests of Marsh

## Table 33 - Chubb

Guests of Chubb

## Table 34 - Chubb

Guests of Chubb





## Talbot . . . putting the style into insurance

We are proud to sponsor the Square Mile Style fashion show and help support the work of Maggie's Centres. We wish the show every success.



[www.talbotuw.com](http://www.talbotuw.com)

Talbot Underwriting Ltd is authorised by the Prudential Regulation Authority and regulated by the Financial Conduct Authority and the Prudential Regulation Authority.

# ACKNOWLEDGEMENTS

The Insurance Institute of London and its Young Members Committee **would like to thank everyone involved** in making this event possible.

With special thanks to:

- Our sponsors without whom this event would not be possible: Catlin Group Limited (Gold Sponsor), ACE European Group, Brit Global Specialty, Canopus, Gen Re, Ince & Co LLP, RGL Forensics, Talbot Underwriting (Silver Sponsors) and Allianz Insurance, Amlin and RSA Insurance Group (Bronze Sponsors).
- House of Fraser for providing the clothing, accessories, make up and back stage styling for the catwalk shows. With particular thanks to Michelle Holmes for all of her assistance in the run up to the show.
- Our industry models for their time (and bravery!): Inga Beale, Vicky Carter, Lorraine Denny, Chris Moore, Robert Pound, Nathan Taylor and Kate Vacher.
- The team at Maggie's for their support and assistance throughout.
- Arabella Weir for donating her time, quick wit and humour.
- Julia Johnson for her captivating performance.
- Hugh Edmeades for overseeing the auction.
- Hannah Kate Smith for choreographing the fantastic catwalk shows.
- Anthony Jefferys for creating the iconic Square Mile Style logo and background tracks for the catwalk shows.
- Laban Brown Design for designing the advertising and printed materials for the event, including this programme. [www.labanbrowndesign.co.uk](http://www.labanbrowndesign.co.uk)
- All of those who kindly secured and donated auction and raffle prizes to help us raise as much money as possible for Maggie's (see pages 8-12 for details).
- Our dedicated volunteers, including Néha Datta and Gemma Henderson.
- And last but by no means least, the Chairs of our organising committee, Karin Garfjeld Roberts and Sydonie Williams, for their vision, hard work, dedication and commitment to making this event such a huge success! We couldn't have done it without you!

To find out more about the Insurance Institute of London  
or to become a member, visit

[www.iilondon.co.uk](http://www.iilondon.co.uk)



The Insurance Institute of London, 20 Aldermanbury, London EC2V 7HY